

R.K. JAIN's GST-Excus

GST | Customs | Excise | EXIM

AN ELECTRONIC LIBRARY FOR
GST • CUSTOMS • EXCISE • SERVICE TAX
FEMA • EXIM • PMLA • ALLIED LAWS



CENTAXTM
LAW PUBLICATIONS PVT. LTD.



GST-ExCus/2025/July DVD/

October 2025

**Sub : Release of Modified version of GST-ExCus DVD-ROM for
October 2025 (Ver. 25.4.0)**

Dear Sir,

We are enclosing the modified **GST-ExCus** DVD for October 2025. This new version of **GST-ExCus** now contains two different Databases. One for GST and other for Customs, Excise, Service Tax, EXIM, FEMA, PMLA, Anti-Dumping and Allied Laws.

You can put the entire data on your hard disk and use **GST-ExCus** without the hassle of putting DVD in the drive. However, if you are short of space on your hard disk, the old option of using the GST-ExCus by inserting the DVD has been retained so that you can use **GST-ExCus** as usual. Latest version is compatible with MS Windows 7/Windows 8/Windows 10, MS Vista as well as MS XP and other Operating Systems, which it was supporting earlier.

Contents of new GST-ExCus Version 25.4.0 (October 2025)

GST Database :

- Case Law (including Court-room Highlights) up to October, 2025 [i.e., up to G.S.T.L. Vol. 101, E.L.T. Vol. 394 (upto Part 3), centaxonline.com Volume 1 to 26 (upto 108) and S.T.R. Vol. 52] [134604 Cases]
- Circulars up to Mid October, 2025 [926 Circulars]
- Notifications up to Mid October, 2025 [1343 Notifications]
- Statutes - Acts, Rules and Forms [285 Statutes]
- Articles on GST & Allied laws [1132 Articles]
- States/UTs [67 State/UT]
- GST Rates, List of Exempted Goods and Services & Clarifications
- FAQ — More than 1000 FAQs on GST Laws, Procedures & Rates

Customs, Excise, Service Tax, EXIM, FEMA, PMLA and Allied Laws Database :

- Case Law (including Court-room Highlights) up to October, 2025 [i.e., up to E.L.T. Vol. 394 (upto Part 3), G.S.T.L. Vol. 101, centaxonline.com Volume 1 to 26 (upto 108) and S.T.R. Vol. 52] [134604 Cases]
- Circulars/Instructions up to Mid October, 2025 [5373 Circulars]
- Notifications up to Mid October, 2025 [17729 Notifications]
- Statutes - 731 statutes including Customs, Excise, FEMA, EXIM, Service Tax & other Allied Acts, Rules, Regulations & Forms.
- Articles on Customs/Excise/EXIM & Allied laws from January 2017 [437 Articles]
- Indirect Tax Budgets from 1986 to 2025 with Finance Act, Finance Minister's Speeches and Highlights of Budget Changes.

We are extremely thankful to you for having patronized **GST-ExCus** and hope you will continue to provide us the feedback of your experience with it. This will help us in further improving upon **GST-ExCus** and make it better and more useful.

Updates/Upgrades on website :

You can also download **GST-ExCus** updates/upgrades from our website : <https://www.centaxonline.com>.

Thanking you.

Yours faithfully,
for CENTAX™ LAW PUBLICATIONS PVT. LTD.

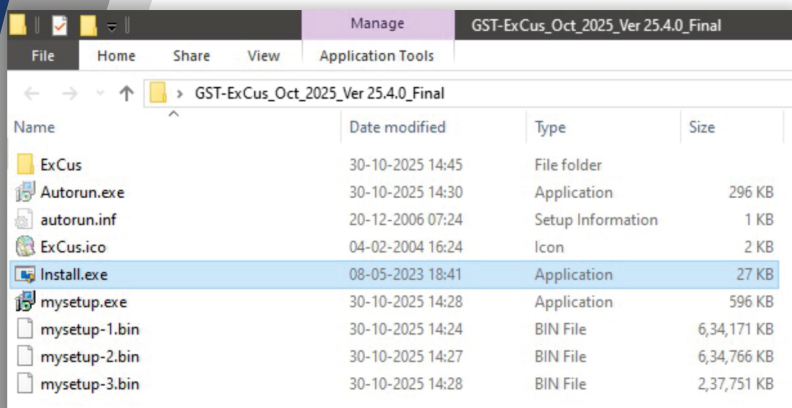
Encl. : as above

Registered Office :

CENTAX™ LAW PUBLICATIONS PVT. LTD., Regd. Off.: 59/32, New Rohtak Road, New Delhi - 110 005

Procedure for installation of updated GST-ExCus DVD-ROM (Version 25.4.0 - October 2025)

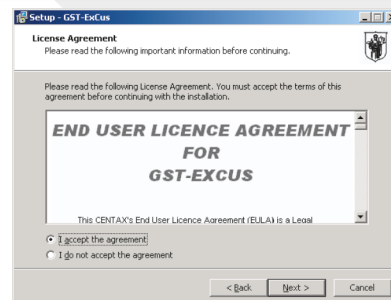
[This Installation Guide provides step-by-step procedure for installation of GST-ExCus (October 2025) which comes in one DVD. The subscriber can avail anyone of the two options - downloading data on computer and using GST-ExCus without inserting GST-ExCus DVD or accessing GST-ExCus with GST-ExCus DVD]



1. Insert the DVD in the drive [Please do not click any icon or button] and wait for approximately 30 seconds. The window you see here will appear on the screen. Double click on install.exe, thereafter the following window appear on the screen.

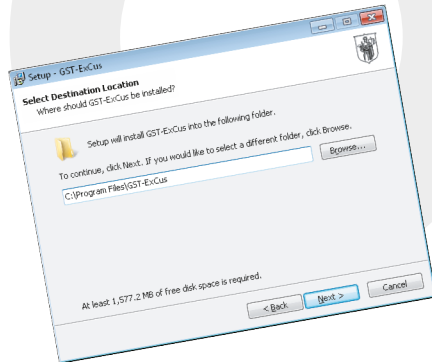
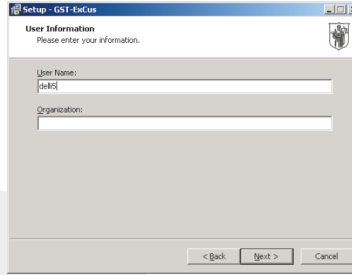


2. Click "Next" in the above window, thereafter the side window appears on the screen. Go through the licence agreement and select "I accept" or "I do not accept". If you do not accept the agreement then the installation process shall terminate. If you select "I accept" then click "Next", then following window appears on screen.



**[Do not use Old ExCus CD/DVD once
New GST-ExCus DVD has been installed.]**

3. In the User Information Window, by default the system name appears in the User Name field, this can be changed by substituting any name you desire. In the field for Organization you can enter the name of your organization or leave it blank as this is an optional field. Please click "Next" to proceed further.

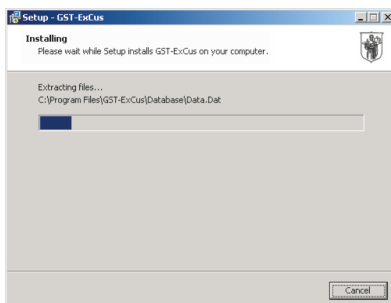
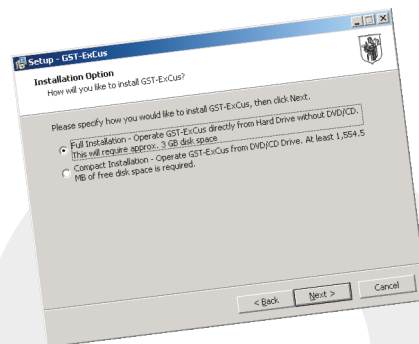


4. This window provides you an option to select "place of installation" on your computer. By default **GST-ExCus** is installed in 'C' drive in "Program files".

5. After you click "Next" in the above window, side window appears. It seeks your option for either Full installation [Requires Apprx. 3 GB space] or Compact installation [Requires Apprx. 1.5 GB space].

If you select "Full installation", you may not need to access **GST-ExCus** through DVD Drive, i.e., presence of **GST-ExCus** DVD in CD drive is not required while using **GST-ExCus**.

GST-ExCus DVD is required if you select Compact installation.



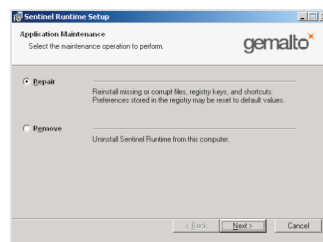
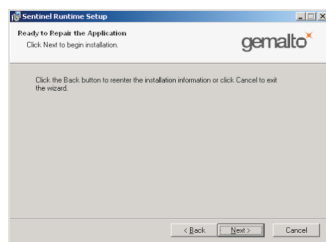
6. After you click "Next" in the above window, the installation process shall start as shown here. This installation may take 10-15 minutes, so please wait. Time taken will depend on whether you have opted for full or compact installation.

**[Do not use Old ExCus CD/DVD once
New GST-ExCus DVD has been installed.]**

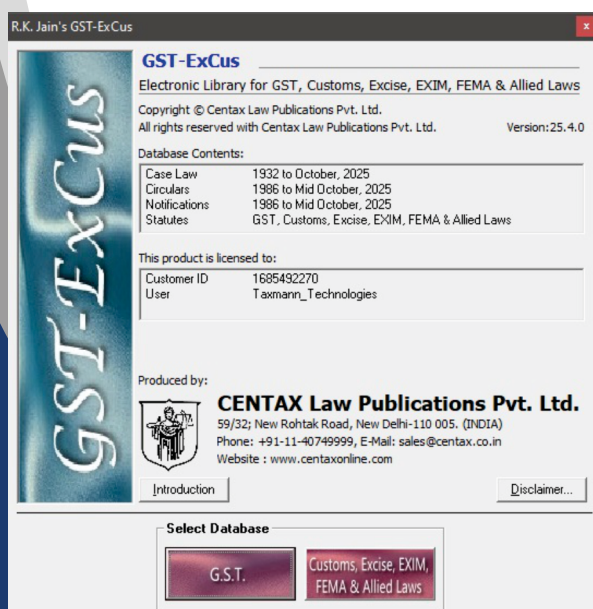
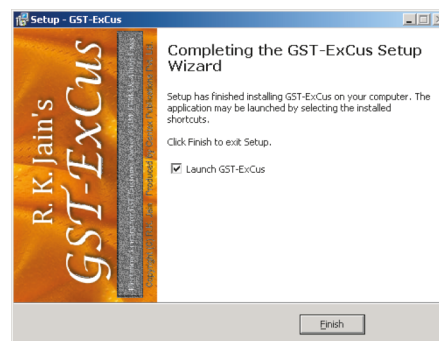
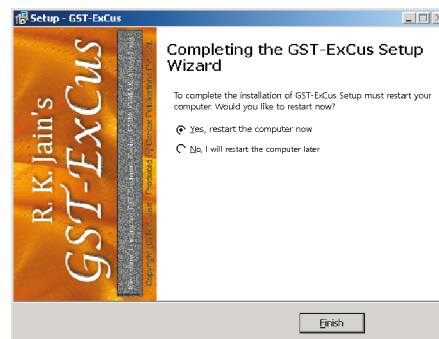
GST-ExCus™

October 2025

7. During installation while loading the HASP utility, following two windows will appear. Select 'Repair' option, in first window & then in second window click on "Next" to continue with the installation process.



8. Depending on the components installed by **GST-ExCus** Setup and whether a restart is required, you will get either of the two windows shown here. In case of the first one, save any unsaved files and click "Finish" to restart your system. (You may choose to restart later, but **GST-ExCus** may not work properly until you restart your system manually). In case of the second window, just click "Finish" to complete the setup process, which will launch **GST-ExCus** immediately. The updated Version 25.4.0 of R.K. Jain's **GST-ExCus** - October 2025 is now on your screen and is ready to use.



9. If you have installed full **GST-ExCus** on your drive, Double click GST-ExCus icon on the screen of your desktop/laptop. In case you have opted for compact installation insert the DVD in the drive, thereafter an icon will appears on your desktop/ laptop and in the Start menu, you can double click to start using **GST-ExCus**. Thereafter the Title window appears on the screen. You can select the Database you desire to use by clicking the brown button as given at the bottom of the window and enjoy using the **GST-ExCus**. You can also change the database while using the **GST-ExCus**, by clicking the last button on the Tool Bar of Home page.

**[Do not use Old ExCus CD/DVD once
New GST-ExCus DVD has been installed.]**

Highlights of new GST-ExCus Version 25.4.0 [October 2025]

- Option of full installation on Hard disc - DVD Drive is made free for other possible uses.
- SINGLE STEP UPDATION without involving processes of removing and installing.
- **GST-ExCus** has been made compatible with Microsoft Windows 7/Windows 8/ Windows 10.
- The overall working and performance of **GST-ExCus** has been further improved to give you best results providing exhaustive hyperlinks.

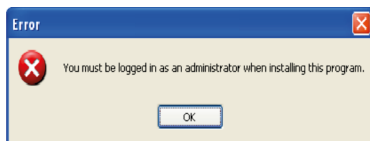
Trouble Shooting

This section has been added using the feedback given by Subscribers. It describes the problems, their cause and the best possible solutions. If you encounter problems during Setup/using **GST-ExCus**, please go through the following :

1. Problem : Setup does not start automatically nor does the **GST-ExCus** run automatically when **GST-ExCus** DVD is inserted in the drive.

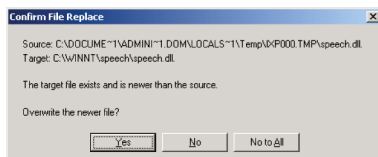
Solution : Now system have been configured to disable auto running of DVD. To manually start Setup take step 1 of the installation procedure given at the beginning.

2. Problem : A window similar to the one shown below appears on Windows NT/2000/XP.



Solution : On Windows NT/2000/XP systems, you must be logged in as a member of Administrator group to install **GST-ExCus**. To resolve this problem, logoff and login as Administrator and run the Setup or contact your System Administrator to do it for you. After installation, it can be run as normal user.

3. Problem : During the installation process, Setup shows a dialogue box similar to the one shown below :



Solution : This box appears on screen if the files being copied are older than the one present on your system. You don't need to overwrite these files. Just click "No To All" to proceed.

**[Do not use Old ExCus CD/DVD once
New GST-ExCus DVD has been installed.]**

4. Problem : ***GST-ExCus*** fails to start on Windows 7/Windows 8/Windows 10 (32 bit/64 bit), after installation and the message "Run Time Error 9 - Subscript out of range" pops up.

Solution : Please click right button of mouse on ***GST-ExCus*** icon on the Desktop and select "Run as Administrator".

5. Problem : Run time error 13- Type Mismatch :

Solution : You are advised to correct your system date/time and Regional Language (United State/India).

6. Problem : When the relevant document in the text window does not get activated even after clicking an item in the result window, the following message is displayed.

"Cannot reach this page :

- Make sure the web address is correct
- Search for this site on Bing
- Refresh the page"

Solution :

- (a) Uninstall all previous ***GST-ExCus*** File
- (b) Go to Run window
 - (i) Write "%temp%"
 - (ii) Click OK
 - (iii) Ctrl + A
 - (iv) Click delete button
- (c) Reinstall the ***GST-ExCus*** using mysetup.exe option as given in Step 1 of the installation procedure.

Help Desk

If you still have any problem, just contact our Help Desk on
Ph. : 011-40749999 (10 AM to 6 PM), Mail : sales@centax.co.in,
Website : centaxonline.com

write to :

Customer Support Desk

CENTAX™ LAW PUBLICATIONS PVT. LTD.

Regd. Off.: 59/32, New Rohtak Road,
New Delhi - 110 005